

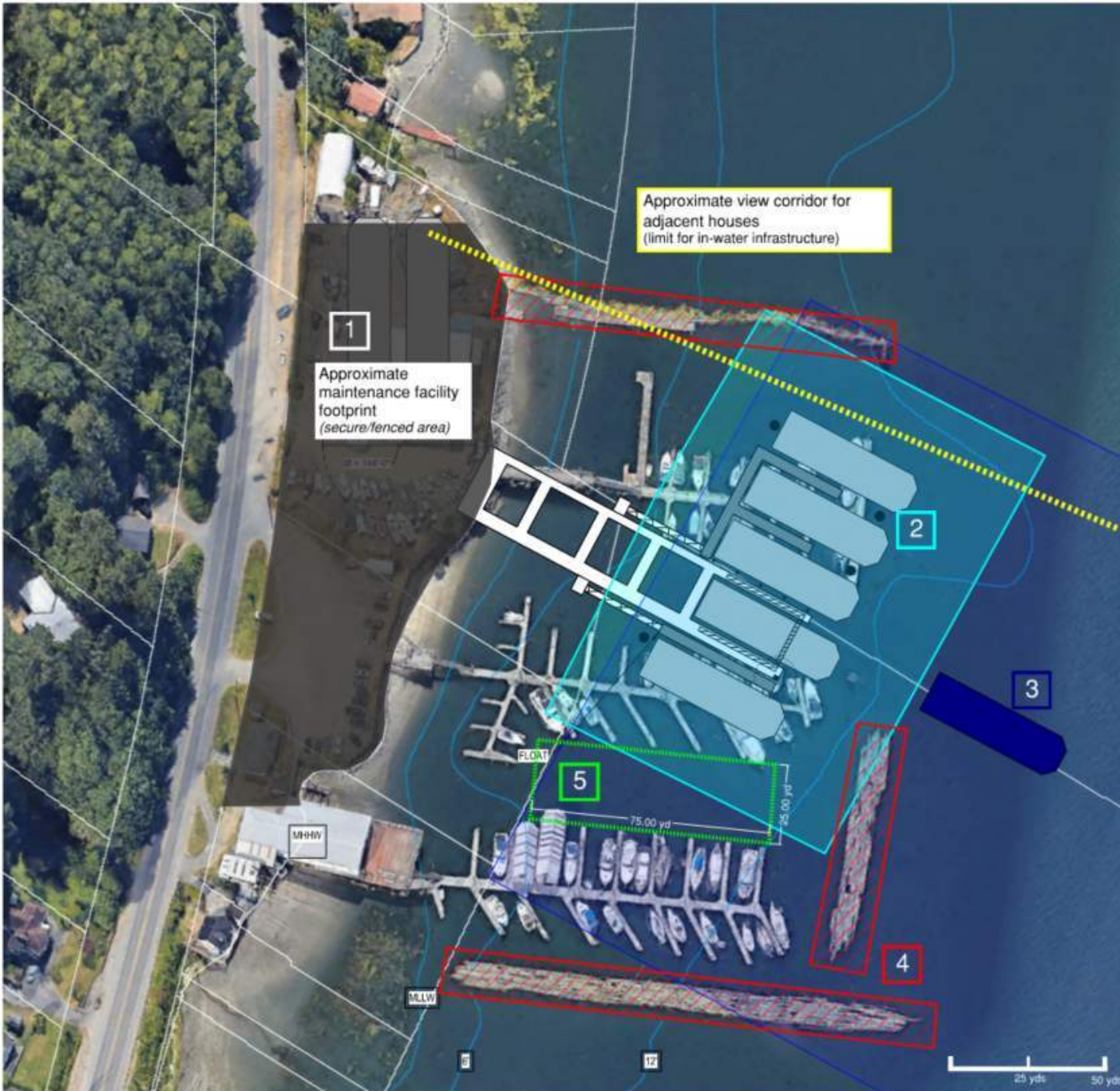


APPENDIX F

SUMMARY OF CHALLENGES OF CO-LOCATING MAINTENANCE FACILITY WITH PUBLIC MARINA OPERATIONS

Summary of Challenges of Co-Locating Public Marina Use with Ferry Maintenance Facility

Conceptual-level facility layout and approximate distances for demonstration of constraints and conflicts



- 1 With proposed layout of maintenance facility shown, remaining property would lack space on site or nearby to provide marina administration, parking, or boat ramp. *Estimated minimum parking of 100 spaces (1 per slip)*
- 2 Per 33 CFR 165.1317, No vessel or person is allowed within 25 yards of a large passenger vessel that is moored.
- 3 Additionally, no vessel or person is allowed within 100 yards of a large passenger vessel that is underway or at anchor, unless authorized by the on-scene official patrol or large passenger vessel master.
- 4 Breakwater removal required for ferry access, will create wave conditions for recreational vessels
- 5 Per Unified Facilities Criteria (UFC) *Design: Small Craft Berthing Facilities* Section 5-2.1 specifications for clear interior channels for recreational marinas/small craft berthing, minimum width should be whichever is greater of:
 - 1.5 L , where L is the overall length of the longest boat using the channel or
 - 75 ft. (23 m) (100 ft. preferred)

Additional Considerations to Note:

Pier placed based on water depths near shore to minimize over-water coverage, as well as provide uplands space needed for boat lift maneuvering.

Removal of existing recreational vessel moorage and breakwaters supports on-site mitigation to compensate for over-water coverage associated with maintenance pier.